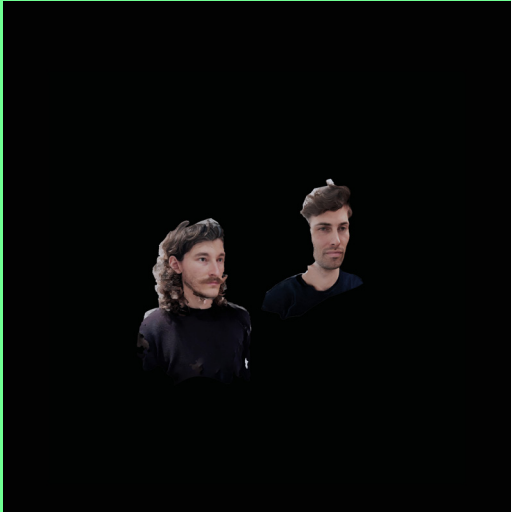


MAXIMILIAN DAVID GRABER & FABIAN TOBIAS REINER



Maximilian David Graber is a German architect based in Zurich. He gained experience at several renowned practices in Munich, Paris, Rotterdam and Zurich. He studied architecture at the TU Munich, Accademia di Architettura Mendrisio and ETH Zurich, where he graduated at the chair of Christian Kerez. He is currently establishing his own practice with first projects in Bavaria.

Fabian Tobias Reiner is an Austrian architect, living and working in Zurich. Educated as architect at ETH Zurich and as architectural theorist at the Architectural Association in London, he now runs workshops, including at the University of Antwerp, designs spatial installations for singer Isabel Pfefferkorn, writes for magazines such as «werk, bauen + wohnen» and lectures at TU Braunschweig.

TEAM MEMBERS

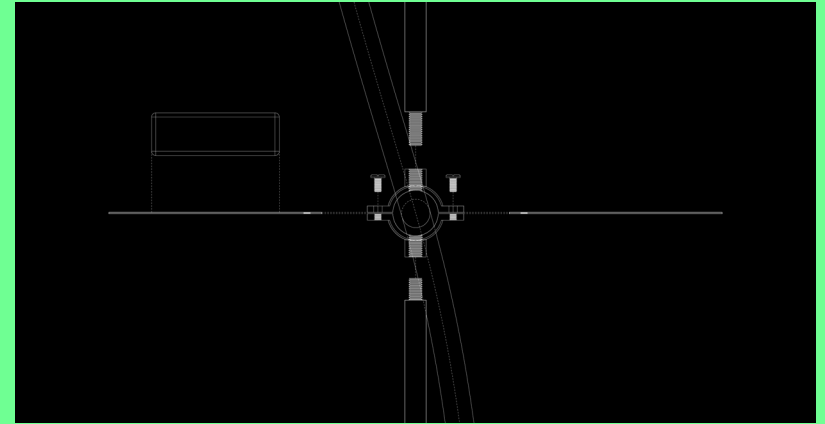
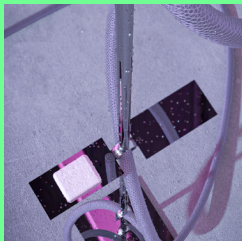
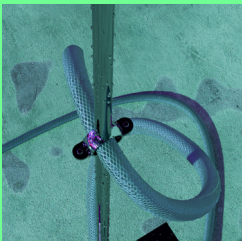
- Maximilian David Graber
- Fabian Tobias Reiner

FOR INFO:

<https://www.fakeauthentic.gallery/>

info@fakeauthentic.it

[@ fa_fakeauthentic](#)



FLAMINGO



It is stiflingly hot outside, the sun is burning first grasses, black plastic is beginning to bend, the tarmac becomes a hotplate, the garden the last little oasis. Urgent refreshment is needed. If in Munich the beer keg were to be tapped, in Madrid the siesta held, in Marrakesh the exfoliating massage rung in and in Greenland another floe of ice to be jumped on, the Milanese citizen knows no better than to run the garden hose. He lifts it up and desperately tries to take a shower. The hour of the Flamingo is heralded.

Simple electrician's pipe clamps, standardised steel rods and metal sheets are joined together. Threaded in, the salutary garden hose creates a fantastic figure that celebrates the waterline. With enormous energy and yet sensual gestures, what often remains unconscious in its drift moves upwards: the water.

The fragility of the elements is visual, their joining an indispensable part of the formal expression. The circular pipe clamps break through the sheer verticality of the threaded rods, the hose becomes the protagonist of the performance.