

ANGELIKI PAPAVALSILEIOU AND GREGORY TSANTILAS



Angeliki Papavasileiou is a greek architect (UTH 2019), content creator and interdisciplinary designer based in Zurich. Her practice focuses on performative fashion projects and functions within the intersection of body, wearables and space. Angeliki designed and produced the Guerilla Show Athens which explores the entity of the conceptual fashion show and questions the limits between spectator and spectacle.

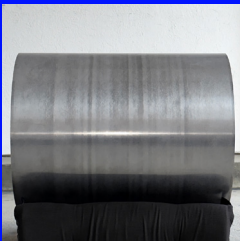
Gregory Tsantilas is an architect (UTH 2015) and an urban designer (MAS, ETHZ, 2018). During the MAS, as an urban researcher, he operated between Morocco and France and developed solid urban strategies addressing social, spatial and ecological scales. Currently based in Zürich, he is actively engaged in various creative pursuits including photography, curation, publishing, design and architecture.

FOR INFO:

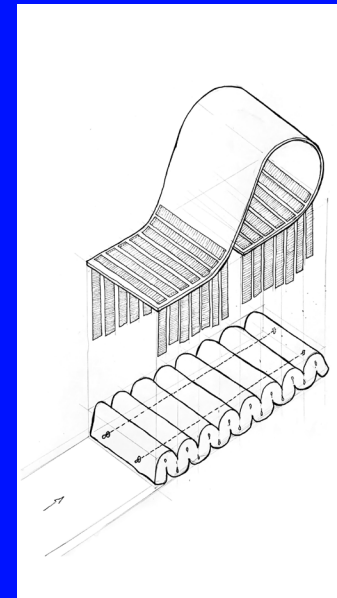
<https://www.fakeauthentic.gallery/>
info@fakeauthentic.it
@ fa_fakeauthentic

TEAM MEMBERS

- Angeliki Papavasileiou
- Gregory Tsantilas



VERMIS



Our submission features a chair and ottoman set crafted from raw aluminum sheets, cushion bases, steel wires, and velcro-fastened belts. The concept behind this piece lies in the paradoxical assembly of its components. A soft, deformed mattress and a cold metallic surface are being strapped together tightly with belts and pushed closer to the floor, creating an edgy yet playful juxtaposition of textures and materials.

By utilising the metallic surface as the seating element and the soft material as the supportive base, our objects aim to address and comment on the roles of materials in industrial design, based on their inherent properties. Our approach hinges on the notion of reversing the conventional roles materials typically assume in design. For example, while metal elements are commonly employed as structural supports due to their durability, cushions and mattresses typically serve as surfaces for sitting or reclining. However, in our design, we have inverted these roles. We achieved this by deforming a long, soft mattress, using wires, applying tension to create a solid yet resilient plinth in a worm-like shape upon which we affixed a curvy aluminium sheet. This simple gesture challenges design paradigms and prompts viewers to reconsider the capabilities of materials. By creatively manipulating materials, we aim to provoke dialogue and thought on the dynamic relationship between materials and design principles.